

Weekly Themes (these themes can vary due to weather and children's ages/ interest)

Week 1, June 26-30 1 Inch by inch, row by row, make this garden grow!

Teachers and students will weed, water and care for our Mt Hope garden.

Week 2, July 5-7 Red, white and blue snack food prep

*A 3-day week because of July 4th, we will make popsicles & patriotic fruit kabobs-so fun!

Week 3, July 10-14 Discovering Dinosaurs

We will travel to prehistoric times and learn about many the many different dinosaurs that roamed our earth. We will dig in the hot sun to take home a dinosaur of our own.

Week 4, July 17-21 The Great Outdoors

Fun in the sun: obstacle courses, forts, water games, and art on the playground

Week 5, July 24-28 Fun in the Sun

Get your suit and towel-water games, slip and slide, mud pies, water table, sprinklers...it's all about water!

Week 6, July 31-August 4 Your Big Backyard

We'll learn about (and maybe observe) the variety of critters and plants that inhabit our own backyards! We will talk about why bees are so important.

Week 7, August 7-11 Outdoor Art

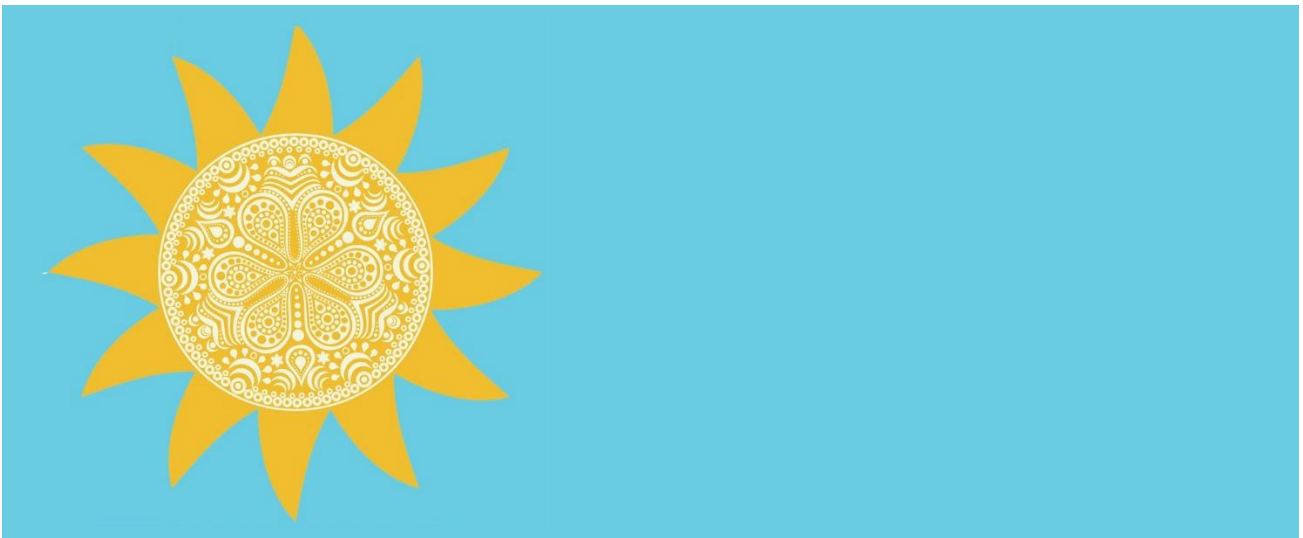
Make magic wands, leaf painting and impressions & outdoor easel with biodegradable paint!

Week 8, August 14-18 Fairy houses and more!

The children will explore, build and play with natural materials.



SUMMER AT MT. HOPE IS ALL ABOUT FUN, FRESH AIR AND FREE, OUTDOOR PLAY!



Mount Hope Montessori School's

Fun in the Sun Summer Program 2023

Helping children help themselves since 1961!

8 weeks of fun for children ages 3-6



Mount Hope Montessori School
PO Box 267
48 Bassetts Bridge Road
Mansfield Center, CT 06250
ph. 860-423-1070
www.mounthopemontessori.com

Child's Name _____ Date of Birth _____
 Age as of June 1: _____ *child must be 32 months at start of program
 Previous school, daycare, or camp experience:

What should we be aware of concerning your child? Please indicate allergies, medications, diet restrictions, or recent household events, such as the birth of a new sibling:

Parent or Guardian Names:

(1) _____ (2) _____
 Phone: _____
 email: _____
 address: _____

My signature below indicates that I agree to pay all fees in full and that I will not hold Mount Hope Montessori School, its employees, or volunteers liable in the event of accident or injury:

Please also list an emergency contact:

Name: _____ Phone: _____

If your child attended Mount Hope Montessori School during the 2022-2023 school year, please make sure we have an up-to-date health record on file. If not, please submit a current health record indicating that your child has had a physical examination in the past year, and a record of your child's immunizations.

Mount Hope Montessori School
 PO Box 267
 Mansfield Center, CT 06250
 Tel: (860) 423-1070
 email: mthopemontessori@snet.net

What to wear-

Clothing- on hot, sunny days, please come wearing a swimsuit! Lightweight clothing that can get messy is best. We spend a lot of time outside, so children should be able to move and climb freely. As for footwear, sneakers are best. Children should also bring a hat, bathing suit, water shoes, and a towel for playing water games outside. Hooded towels work great! Extra outfits are a must!

What to bring-

Sunscreen and insect repellent- please apply sunscreen at home before coming to camp. Campers will have additional sunscreen and insect repellent applied as needed during the day if parents request it.

Lunch- Pack your child a lunch and snack in an insulated lunch box with a cold pack. We provide water to drink throughout the day. We are unable to heat food during the summer months.

Extra clothing- Please pack at least one complete change of clothes in a Ziploc bag, and pull-ups and wipes if needed. **Label Everything.**

Program Fees Per Week or Day

Full Day 9:00- 4:00	Half Day 9:00-12:30	Daily Rate Half-Full
\$350	\$240	\$55-\$80

July 4th week is prorated. Full day week is \$210 and half day week is \$144. Closed July 3rd & 4th

Please fill out the information below. Return the form with your child's health record to:

Mount Hope Montessori School
 PO Box 267
 Mansfield Center, CT 06250
 Phone: (860) 423-1070

Please check the weeks your child will be joining us:	Full Days	Half Days
	9:00 am- 4:00 pm	9:00 am- 12:30 pm
Week 1: June 26-30		
Week 2: July 5-7		
Week 3: July 10-14		
Week 4: July 17-21		
Week 5: July 24- 28		
Week 6: July 31-Aug 4		
Week 7: Aug 7-11		
Week 8: Aug 14-18		

Mount Hope is offering an eight-week summer program.

of camp weeks: _____
 times rate: _____
 Subtotal: _____
 Less deposit: _____
 Total due: _____

A \$50 nonrefundable deposit will hold your child's place in camp. Deposit will be applied to your last week. We will collect payments for weeks 1-4 by June 27th, and weeks 5-8 by July 25th, or you can pay in advance. Full payment is required for the days/weeks your child will attend the program. Please make checks payable to Mount Hope.