

***Weekly Themes** (these themes can vary due to weather and children’s ages/ interest)*

**Week 1, June 23-June 27** Inch by inch, row by row, make this garden grow!

Teachers and students will plant seeds for school and to take home, and tend to MH gardens.

**Week 2, June 30-July 3** Red, white and blue snack food prep

We will make popsicles & patriotic fruit kabobs-so fun! *A 4-day week because of July 4<sup>th</sup>*

**Week 3, July 7-11** Discovering Dinosaurs

We will travel to prehistoric times and learn about many the many different dinosaurs that roamed our earth. We will dig in the hot sun to take home a dinosaur of our own.

**Week 4, July 14-18** The Great Outdoors

Fun in the sun: obstacle courses, forts, water games, and art on the playground

**Week 5, July 21-July 25** Fun in the Sun

Get your suit and towel-water games, slip and slide, mud pies, water table, sprinklers...it’s all about water!

**Week 6, July 28- August 1** Your Big Backyard

We’ll learn about (and maybe observe) the variety of critters and plants that inhabit our own backyards! We will talk about why bees are so important.

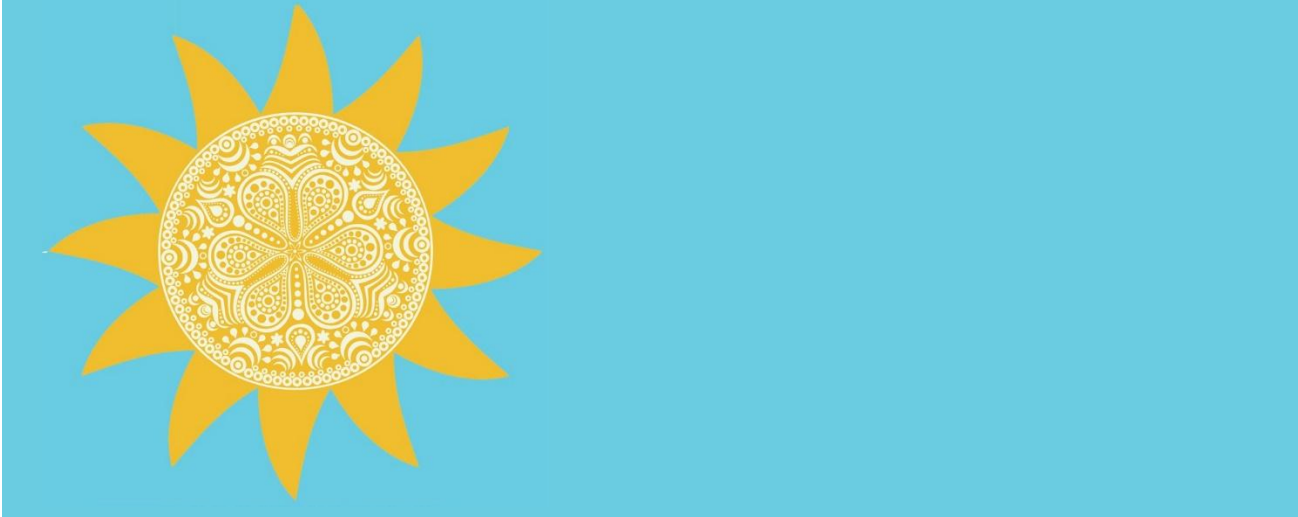
**Week 7, August 4-8** Outdoor Art

Make magic wands, leaf painting and impressions & outdoor easel with biodegradable paint!

**Week 8, August 11-15** Fairy houses and more!

The children will explore, build and play with natural materials.

***SUMMER AT MT. HOPE IS ALL ABOUT FUN, FRESH AIR AND FREE, OUTDOOR PLAY!***



**Mount Hope Montessori  
School’s**

**Fun in the Sun  
Summer Program 2025**

*Helping children help themselves since 1961!*



Mount Hope Montessori School  
PO Box 267  
48 Bassetts Bridge Road  
Mansfield Center, CT 06250  
ph. 860-423-1070  
[www.mounthopemontessori.com](http://www.mounthopemontessori.com)

Child's Name \_\_\_\_\_ Date of Birth \_\_\_\_\_  
Age as of June 1: \_\_\_\_\_ \*child must be 32 months at start of program  
Previous school, daycare, or camp experience:

What should we be aware of concerning your child? Please indicate allergies, medications, diet restrictions, or recent household events, such as the birth of a new sibling:

Parent or Guardian Names:

(1) \_\_\_\_\_

(2) \_\_\_\_\_

Phone: \_\_\_\_\_

\_\_\_\_\_

email: \_\_\_\_\_

\_\_\_\_\_

address: \_\_\_\_\_

\_\_\_\_\_

My signature below indicates that I agree to pay all fees in full and that I will not hold Mount Hope Montessori School, its employees, or volunteers liable in the event of accident or injury:

\_\_\_\_\_

Please also list an emergency contact:

Name: \_\_\_\_\_

Phone: \_\_\_\_\_

If your child attended Mount Hope Montessori School during the 2023-2024 school year, please make sure we have an up-to-date health record on file. If not, please submit a current health record indicating that your child has had a physical examination in the past year, and a record of your child's immunizations.

Mount Hope Montessori School  
PO Box 267  
Mansfield Center, CT 06250  
Tel: (860) 423-1070  
email: mthopemontessori@snet.net

What to wear-

**Clothing-** on hot, sunny days, please come wearing a swimsuit! Lightweight clothing that can get messy is best. We spend a lot of time outside, so children should be able to move and climb freely. As for footwear, sneakers are best. Children should also bring a hat, bathing suit, water shoes, and a towel for playing water games outside. Hooded towels work great! Extra outfits are a must!

What to bring-

**Sunscreen and insect repellent-** please apply sunscreen at home before coming to camp. Campers will have additional sunscreen and insect repellent applied as needed during the day if parents request it.  
**Lunch-** Pack your child a lunch and snack in an insulated lunch box with a cold pack. We provide water to drink throughout the day. We are unable to heat food during the summer months.  
**Extra clothing-** Please pack at least one complete change of clothes in a Ziploc bag, and pull-ups and wipes if needed. **Label Everything.**

Program Fees Per Week or Day

Full Day 9:00- 4:00	Half Day 9:00-12:30	Daily Rate Half-Full
\$379	\$260	\$62-\$87
July 4th week is prorated. Full day week is \$303 and half day week is \$208. Closed July 4 <sup>th</sup>		

Please fill out the information below. Return the form with your child's health record to:

Mount Hope Montessori School  
PO Box 267  
Mansfield Center, CT 06250  
Phone: (860) 423-1070

Please check the weeks your child will be joining us:	Full Days	Half Days
	9:00 am- 4:00 pm	9:00 am- 12:30 pm
Week 1: June 23-27		
Week 2: June 30-July 3		
Week 3: July 7-11		
Week 4: July 14-18		
Week 5: July 21- 25		
Week 6: July 28-Aug 1		
Week 7: Aug 4-8		
Week 8: Aug 11-15		

Mount Hope is offering an eight-week summer program.  
Drop-ins are not allowed!

# of camp weeks: \_\_\_\_\_

times rate: \_\_\_\_\_

Subtotal: \_\_\_\_\_

Less deposit: \_\_\_\_\_

Total due: \_\_\_\_\_

A \$50 nonrefundable deposit will hold your child's place in camp. Deposit will be applied to your last week. We will collect payments for weeks 1-4 by June 23rd, and weeks 5-8 by July 21st, or you can pay in advance. Full payment is required for the days/weeks your child will attend the program. Please make checks payable to Mount Hope.